

## The ratio of open space to total area

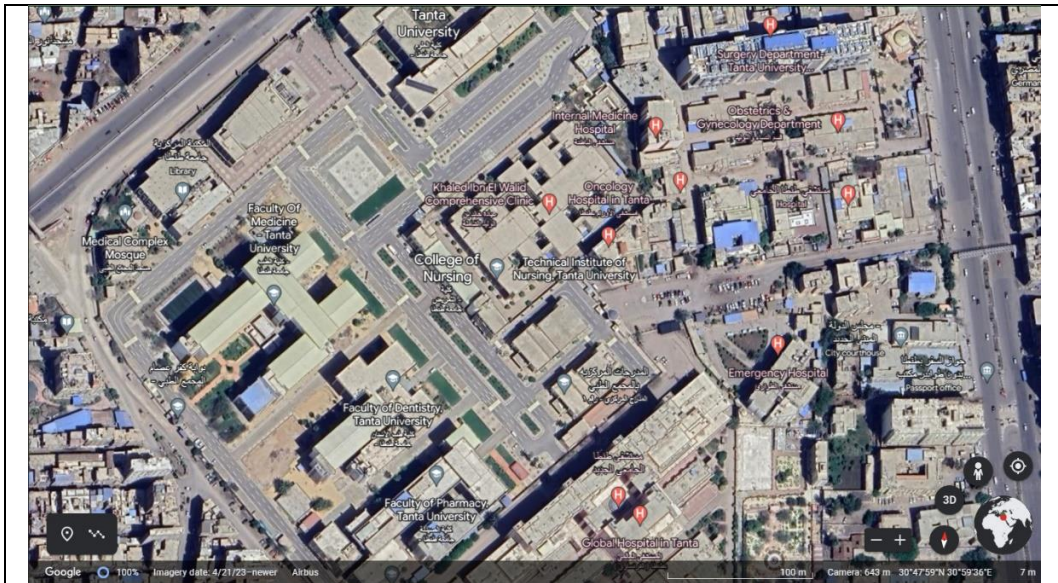


Image for Medical campus by google earth  
(Tanta University, Egypt)



Image for Seberbay campus by google earth  
(Tanta University, Egypt)

### Description:

These two images show us the ratio of open space to total area. We used the formula you gave us to count this ratio. According to this formula we found that the ratio of open space to total area: 76 %